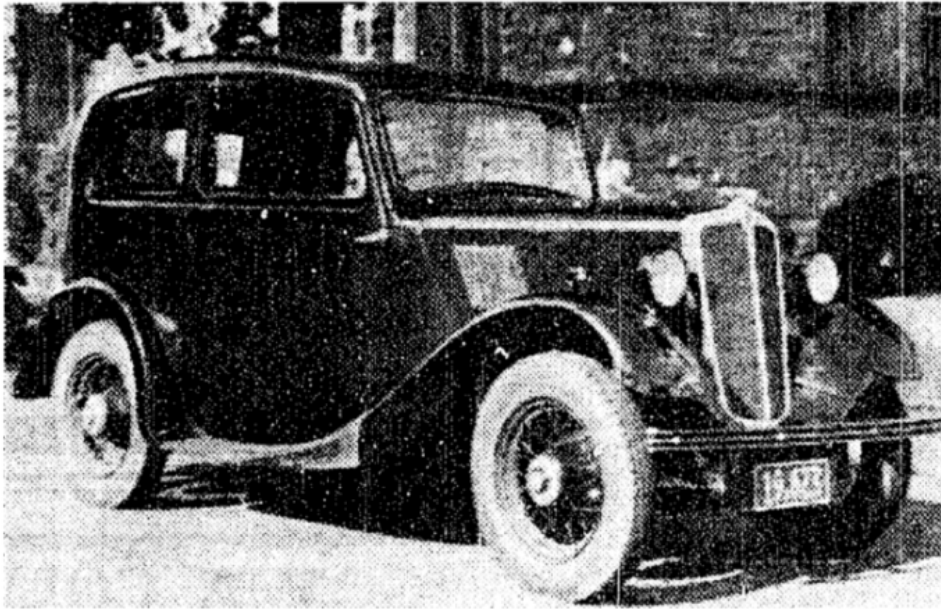


Papers Past

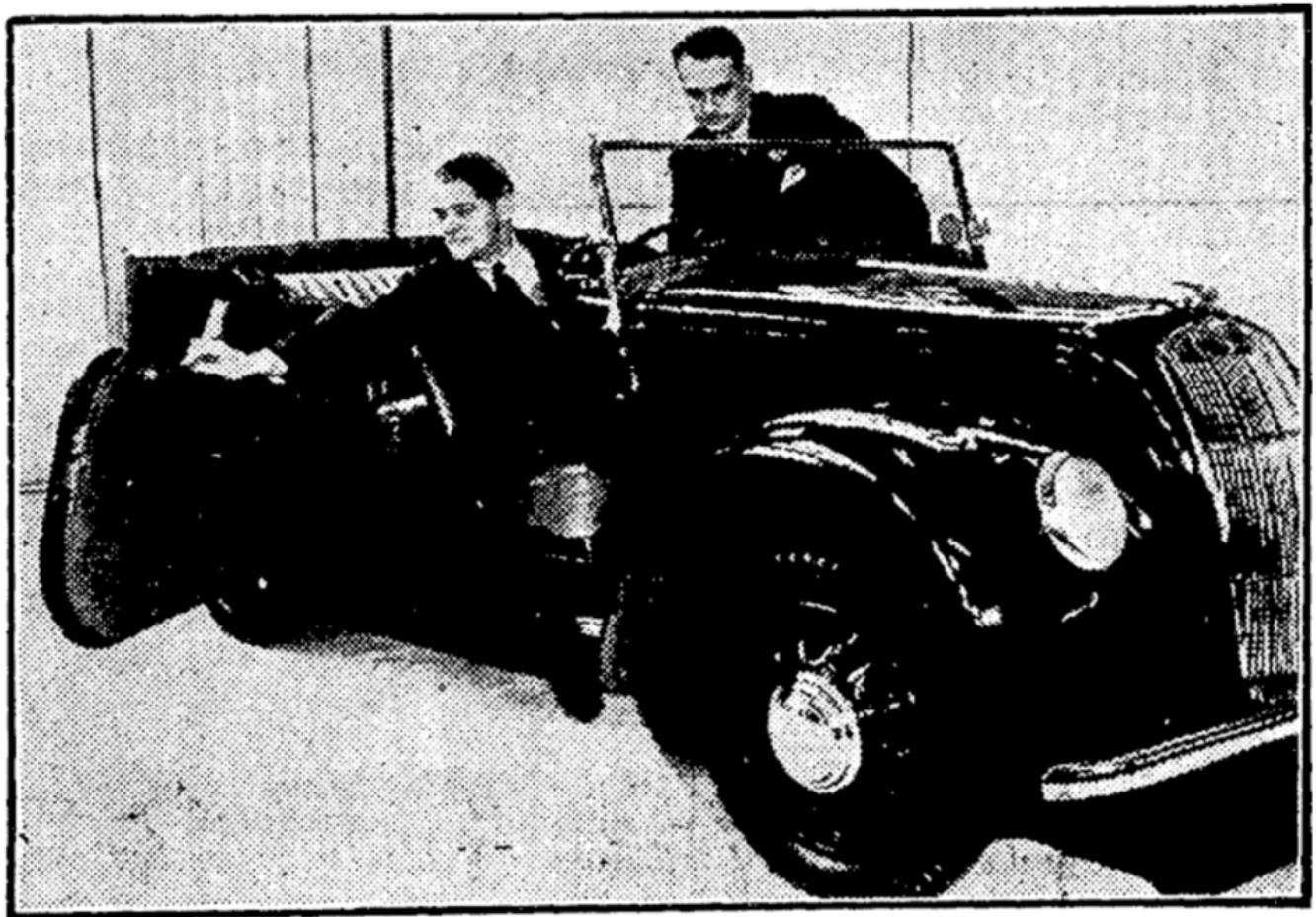


NEW ZEALAND HERALD,
VOLUME LXXI, ISSUE 21940,
25 OCTOBER 1934

REDESIGNED MORRIS EIGHT

A four-seater "family" car is the most important development in the Morris range of models for 1935. It has a larger body and engine than the Minor, which it replaces, and it incorporates many fine features.

PRESS, VOLUME LXXV,
ISSUE 22691, 21 APRIL 1939



The new Morris Eight. This photograph, which shows Viscount Nuffield with one of his latest Morris 8 h.p. cars, was taken at the last Earl's Court motor show.